

ANNEX: Winter Installation with Spacer Tool Wall Cladding – Classic Edition

Classic Edition Board:

- Please use the spacing tool provided with your order to maintain the minimum required space when temperatures drop below 5 degrees Celsius.
- Space the boards apart using the aluminum guide as shown in the following illustrations.
- Spacing of 1.3 MM.



Starting
Trim



Install the first board as indicated in the installation guide and fix it to the building.

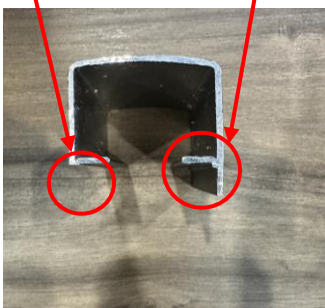


Install the second board as indicated in the installation guide.

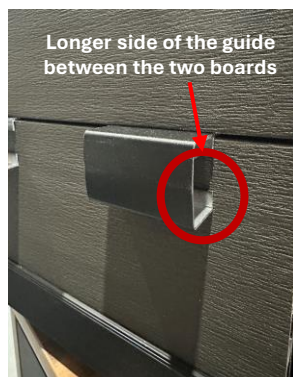
DO NOT FIX THE BOARD TO THE BUILDING

4 Use the spacing guide provided by Fiberwood (2 guides included). Be sure to use the longer edge to insert between the two boards.

Side resting on the board Side between the two boards



5 Install the guide between the board already fixed to the building and the second board that is simply placed down.
DO NOT FIX IT to the building now.



6 Install the guides to level the next board.
Minimum of 2 guides on a 12-foot board.



The tool is designed to create a space of approximately 1.3 mm during installations in cold weather (5 degrees Celsius or less) to allow for expansion during the summer season.

Fix the next board using Fiberwood screws. Once the new board is properly fixed, remove the guides and repeat the process to install the remaining boards.